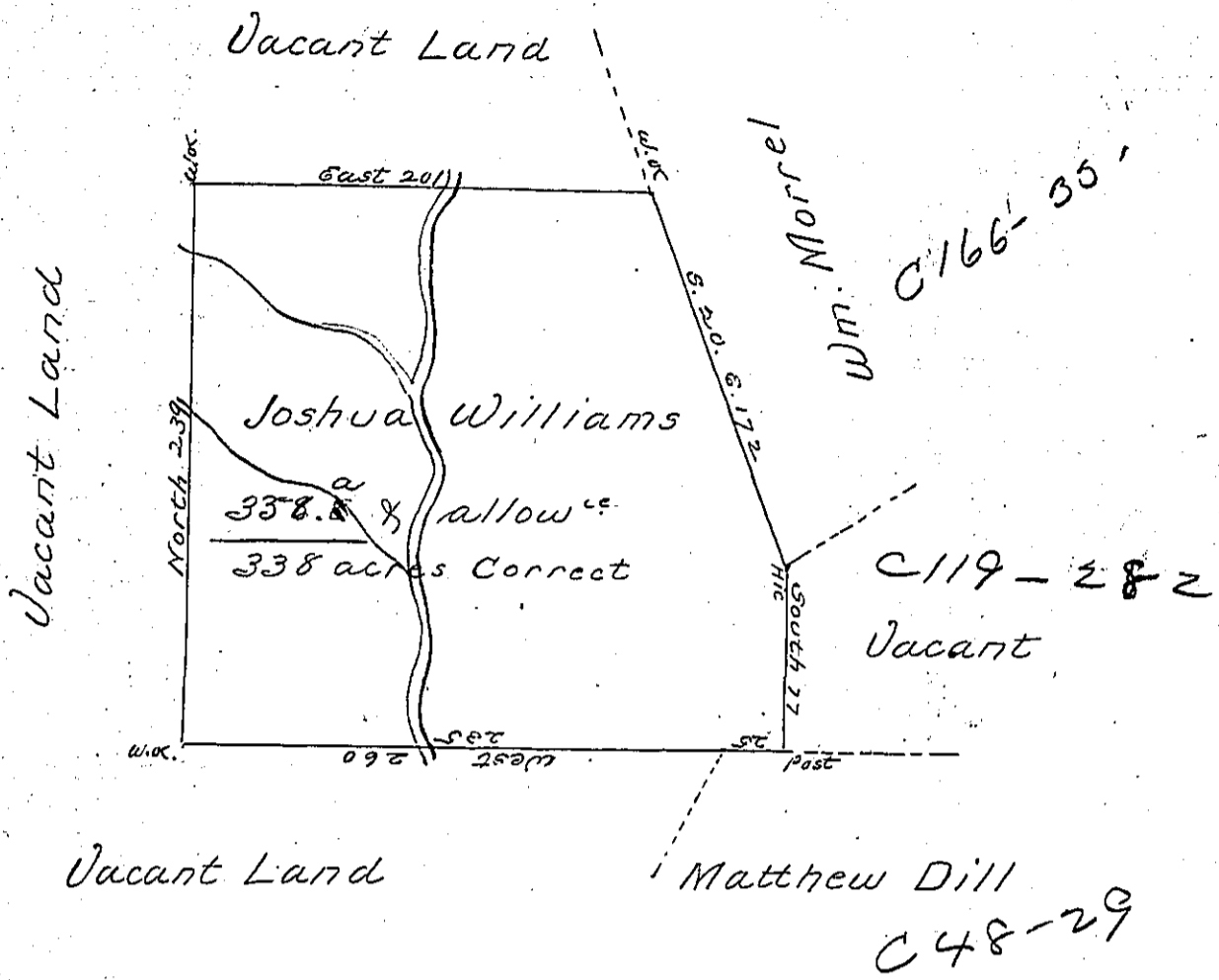


264-224



Survey'd to Joshua Williams on the
 27th Day of November 1773 The above described
 Tract of Three hundred ^{thirty eight} ~~thirty six~~ acres & three
~~quarters~~ & the usual allowance of six
 p^t. Situate on a Draught of Dills Branch
 adjoining Matthew Dill in Westmorland County
 By Warrant of the 25th Day of March 1773

J.
 Joshua Elder K^s.

To John Lukens Esqr. S. Genl.

IN TESTIMONY that the above is a copy of the original remaining on file in
 the Department of Internal Affairs of Pennsylvania, made
 conformably to an Act of Assembly approved the 16th day of
 February, 1833, I have hereunto set my Hand and caused
 the Seal of said Department to be affixed at Harrisburg,
 this third day of February 1903

James W. Latta
 Secretary of Internal Affairs.